

Country's Best

# Log Homes

**UPDATE**

The latest news in log home lending

Save  
**Energy**  
Save  
**Money**

- Windows that lower your monthly bill
- Live off the grid with wind power

Get your deck ready for summer

**20+**  
**Floor Plans!**  
Find yours here

www.loghome.com

JULY 2009

\$7.99CANADA

07



Display until June 20, 2009

0 74808 02221 2

please recycle this magazine

**Lighting • Landscaping • Log Styles**

**plus**



# Legacy Quest

Inspired by childhood memories, one Wisconsin couple builds a weekend getaway on the banks of White Sand Lake.

by Teresa L. Wolff > photos by Roger Wade > styling by Debra Grahl

A king post truss and peaked eave protect the front entryway of the Walshes' vacation home. Asphalt shingles bring out the forest green hue of the aluminum-clad Pella windows, while faux river rock adds a "lodge" feel to the pillars.

For John and Judi Walsh, owning a log home was like continuing a family tradition. As a child, John's family had stayed in log cabins while vacationing in Wisconsin's North Woods. Judi had grown up in a lakeside home, and her love for the water carried over into her adult years, even after she and John were married and raising their three children near Madison, Wisconsin.

"We always wanted to carry on the legacy from our families," John says. "We also hoped to create a vacation home where our own children eventually could bring their families."

Judi's love for water meant that building on a lakefront property was a must for the Walshes, but finding that perfect piece of land was not an easy feat. There were very few lots available that met Judi's strict criteria: The lake they would build on had to have eagles and loons, which are native to the area.

"Our Realtor took us out on a motor boat on White Sand Lake, and we instantly fell in love with the clean, pristine setting," recalls Judi. "Then, as we rounded a bend, I saw a young eagle perched in a tree. Then I spotted a family of loons. We were sold."

Fortunately for the couple, a group of lots on the lake, which is located near Lac Du Flambeau in northern Wisconsin, had just become available. John and Judi purchased 8 acres with 490 feet of lakefront access and set out to create their log home.

Once they had their ideal property, Judi began searching through log home magazines to find a floor plan that would suit their lifestyle and happened upon The Big Fork Lake plan by Tomahawk Log & Country Homes in Tomahawk, Wisconsin. In addition to incorporating the layout they were looking for, the plan allowed for an unobstructed view of White Sand Lake through a two-story expanse of windows.

Additionally, John was attracted to the company's Energy-Log insulated, hand-hewn, half-log siding construction system for its low-maintenance qualities. Plus, Tomahawk's insulation system would be more suitable for when they were away from the lakefront home and would turn down the heat to conserve energy.

Ron Volz, vice president for Tomahawk Log & Country Homes, served as the general contractor on the project. Judi relates it was great fun to work with the Tomahawk crew. "Each time John and I came to the construction site, the carpenters were so excited to



In the entry, a dark green door and single-side transom from Pella set the tone for the home's "North Woods" theme. Full round pine logs provide the structural support.

show us what they had completed," Judi says. "They were proud of this home and seemed to love it as much as we did."

At 4,000 square feet spread over three levels, the plan met their needs for family vacation gatherings. "Because we wanted to be able to someday leave the home to our children, we wanted sufficient bedroom space and entertaining areas to accommodate large groups. Tomahawk's plan was exactly what we were looking for," Judi says.

The main floor's open great room is flanked on one side by the dining room and kitchen, and the powder room and master bedroom suite on the other. The laundry is off the hallway con-



necting the oversized two-car garage to the home. A screened-in porch is adjacent to the kitchen and dining room.

To accommodate even more guests, a separate apartment is located above the three-car detached garage on the other side of the driveway. The apartment includes a bedroom, a small kitchen and a sitting area. A craft room for Judi also is located in the second story.

To transform the exterior of their vacation spot into an inviting, yet easy-to-care-for, setting, the homeowners hired Custom Landscaping of Eagle River, Inc. Trees removed during excavation were replaced, and perennial flower beds were added for color without a lot of maintenance. They also included a stone walkway from the home down to the lake, which Judi says makes hauling equipment and food much easier.

"We had several dead trees that needed to be removed for fear the wind would blow them over onto the house," Judi recalls. "The very day the gentleman was to take out the trees, I noticed a young eagle roosting in one of them. I asked him to leave the tree and stake it in such a manner that, if it did fall over, it would fall

**Faux river rock faces the floor-to-ceiling wood-burning fireplace in the great room (opposite). Slabs of flagstone form the hearth, while a half-log serves as the mantel. Built-in bookcases store a plethora of reading material—perfect for cuddling up in front of the fire on a cool Wisconsin afternoon.**

**Hand-hewn pine collar ties span the width of the great room (below), adding drama without obstructing the view through the expanse of windows. Judi selected leather furniture for its comfort and ease of maintenance. A braided rug protects the rustic maple floor.**







The Walshes' efficient kitchen (left) features rustic hickory cabinets, a ceramic-tile backsplash and flooring, and granite countertops. Judi's pinecone-laced pot rack is suspended from the tongue-and-groove knotty-pine ceiling accented with pine log beams.

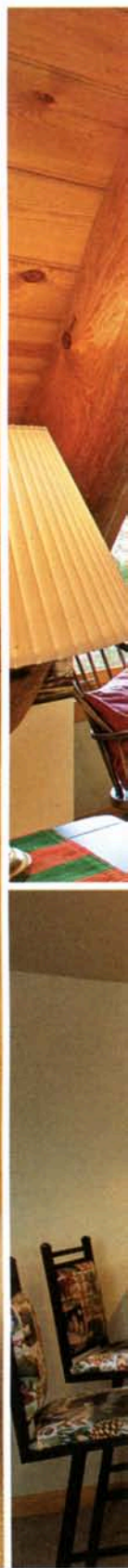
A cedar base and cherry top form this rustic-style dining room set (below). The pinecone-themed chandelier complements the pot rack in the adjacent kitchen. Judi opted for pinecones and evergreen branches instead of drapes to preserve the view.



toward the forest. He obliged, and every morning I am awakened by the sound of birds singing."

Although the Walshes' vacation home is approximately the same size as their more contemporary-style permanent residence, they find they would rather be partaking in the beauty of nature than lounging by their pool in Madison. Whether it's paddling their kayaks, going for an exhilarating spin on their jet ski or just relaxing on their pontoon boat, they always can find some way to enjoy the splendors of the lake.

"When we're at the lake in our log home, time seems to pass more slowly. Life just isn't as frantic," Judi says. "We have time to do what we want to do." CBLH







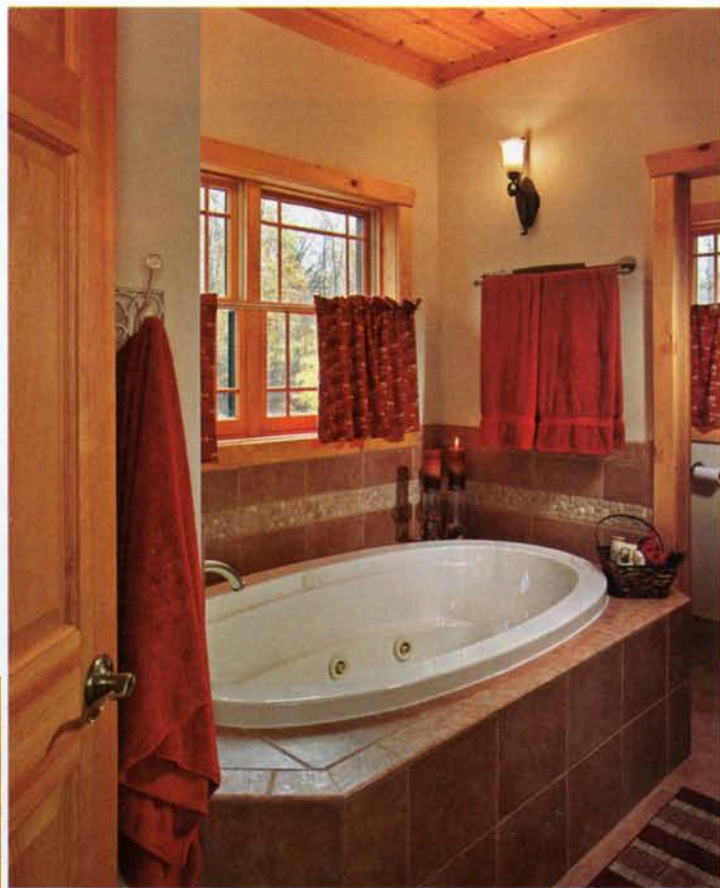
The green bunk bed, matching chest of drawers and iron sculpture highlight the North Woods decorating theme in the Walsh home (above). Neutral oatmeal-colored paint covers the drywall, accentuating the patina of the knotty-pine ceiling and pine accent logs.

Tiffany glass pendant lamps illuminate the granite top of the pine bar in the lower level (left). Judi selected a wildlife fabric for the metal bar stools.

Tomahawk Log & Country Homes connected the two gable dormers with a shed dormer to increase the second-story usable space, including headroom for the stairway and a loft sitting area (opposite). Plush carpet meets the tongue-and-groove knotty pine walls and ceiling in the loft.

Red accents liven up the master bath (right). Ceramic tile encases the Jacuzzi tub and the pebble accent tiles mimic the river rock used for the fireplace in the great room.

Minimalist grilles in the Pella windows and doors help to keep the view uninterrupted in the master bedroom (below). Judi tucked pleated shades under the trim for added privacy. The private deck off the bedroom allows John and Judi to enjoy their morning coffee undisturbed.



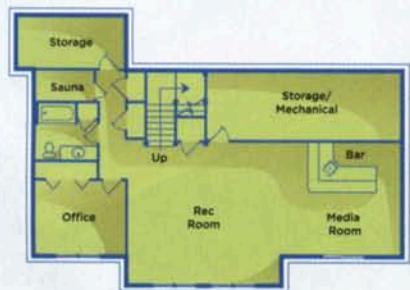


Stone pavers form the walkway from the home to the lakefront (above). Although the fire pit was an afterthought, the Walsh family spends hours there enjoying the forest scenery.

Pine posts and beams form the structure for the screened-in porch next to the kitchen (right), which often doubles as a second dining room when the home is overflowing with guests. The glass-topped wicker table and matching chairs can withstand the cold and snow of a northern Wisconsin winter, making them ideal for year-round use.



Second Floor



Basement



First Floor

**RESOURCES**

Square footage: 4,000

# Bedrooms: 3

# Bathrooms: 3.5

Producer; general contractor: Tomahawk Log & Country Homes, Inc., Tomahawk, WI. Circle 029 on the Reader Service Card between pages 72-73 for free information.

Log species: Pine